

Homework Assignment #1—Syllabus, Staff, and Keyboard
Due Tuesday, August 30th

Name: _____

I. Syllabus

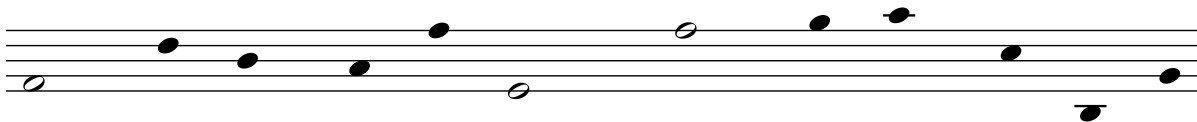
1. I can resubmit any homework assignment I originally submitted on time for an improved grade, up to and including 100%. **True** or **False** (circle one)
2. The Midterm and Final Exams in this class are each worth _____ of my final grade; the Composition Project is worth _____ of my final grade.
3. Which of the following is everyone required to bring to every class meeting?
 - A. Textbook, pencil, and eraser
 - B. Textbook, pencil, eraser, and manuscript paper
 - C. Textbook, pencil, eraser, and keyboard
 - D. Manuscript paper, pencil and eraser, and keyboard
4. How many free absences, no questions asked, am I allotted this semester?

A. 1	C. 3
B. 2	D. 4
5. How many percentage points are taken off homework assignments per class period they are submitted late? / How many class periods until they automatically receive a '0'?

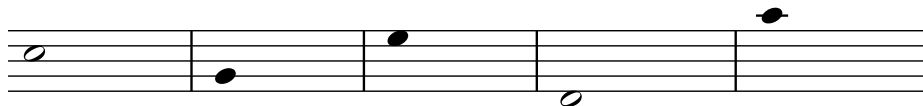
A. 7% / 2	C. 15% / 4
B. 10% / 5	D. 7% / 5

II. Staff

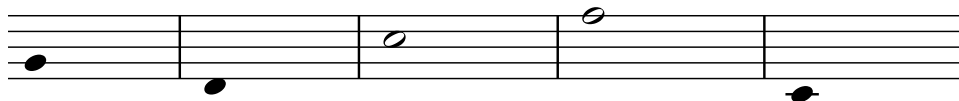
1. The musical staff has _____ lines and _____ spaces.
2. Circle all the closed noteheads that are on lines in this example.



3. Write a descending step below each of these notes. Match open/closed noteheads with the format of the given notes.



4. Write an ascending leap above each of these notes. Match open/closed noteheads with the format of the given notes.

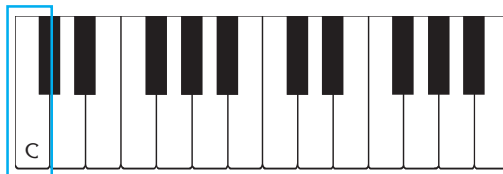


5. In the blank spaces, label the contour between note in this melody in one of four ways: ascending step (“AS”), ascending leap (“AL”), descending step (“DS”), or descending leap (“DL”).

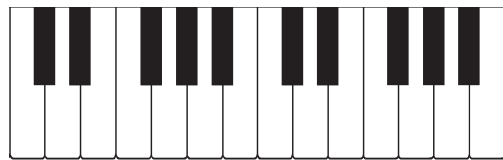
Two musical staves are shown. The first staff has a treble clef and a key signature of two flats. It contains a melody with contour lines connecting the notes. A blue box labeled "AL" is placed under the first contour line. The second staff is identical but has a "5" above the first note and blank lines for labels.

III. Keyboard

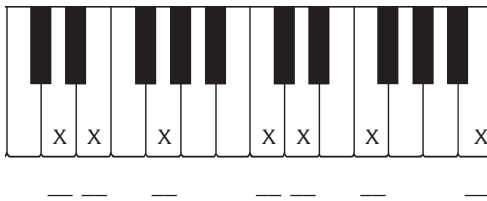
1. Identify all C's and F's by writing those letters on the corresponding keys.



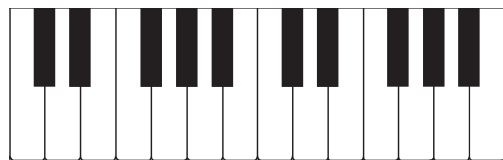
2. Identify all A's and D's by writing those letters on the corresponding keys.



3. Provide the letter names for each indicated key.



4. Draw arrows connecting pairs of keys that are a half step apart.



5. Draw an “X” on key that is an octave above the given key with an “X.”

